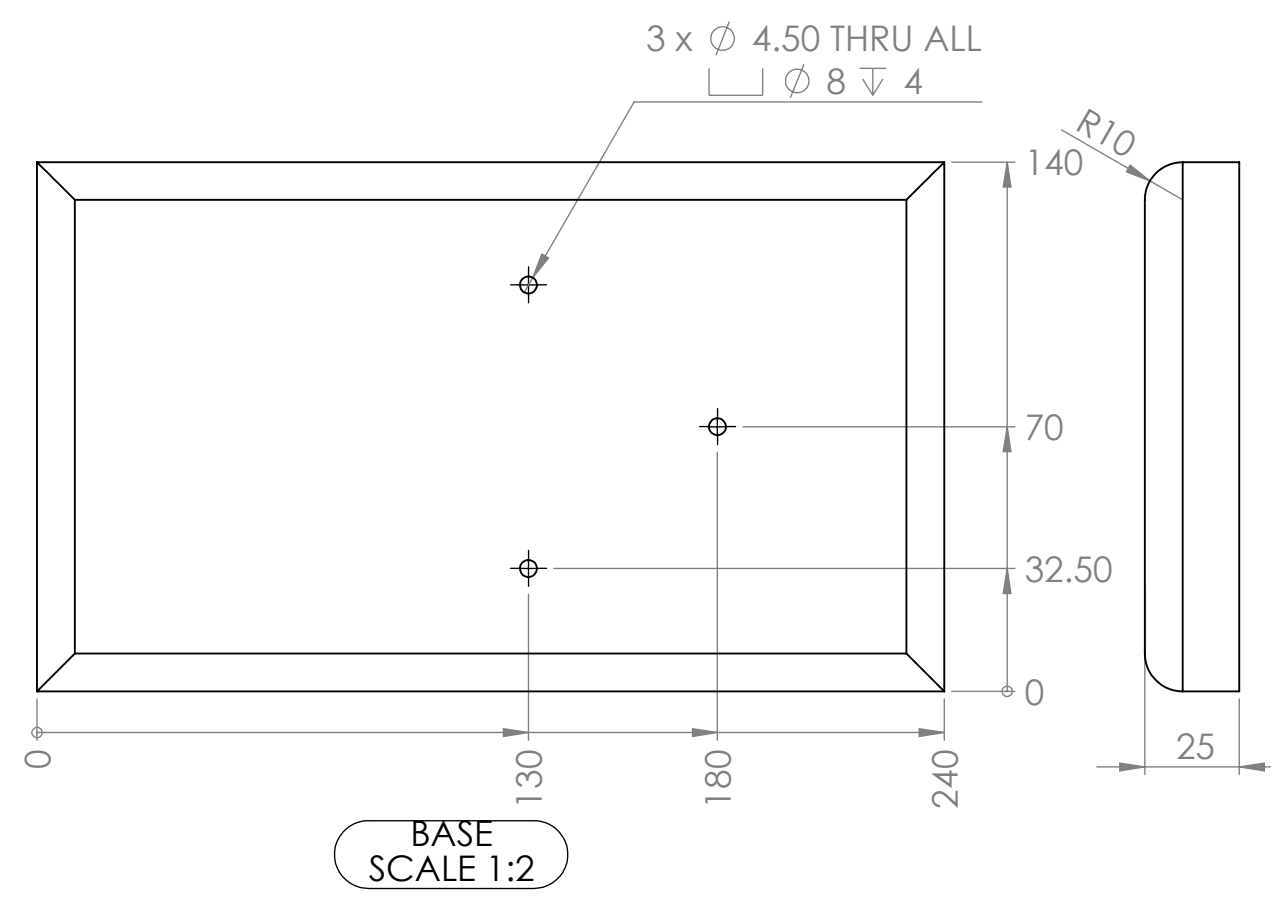
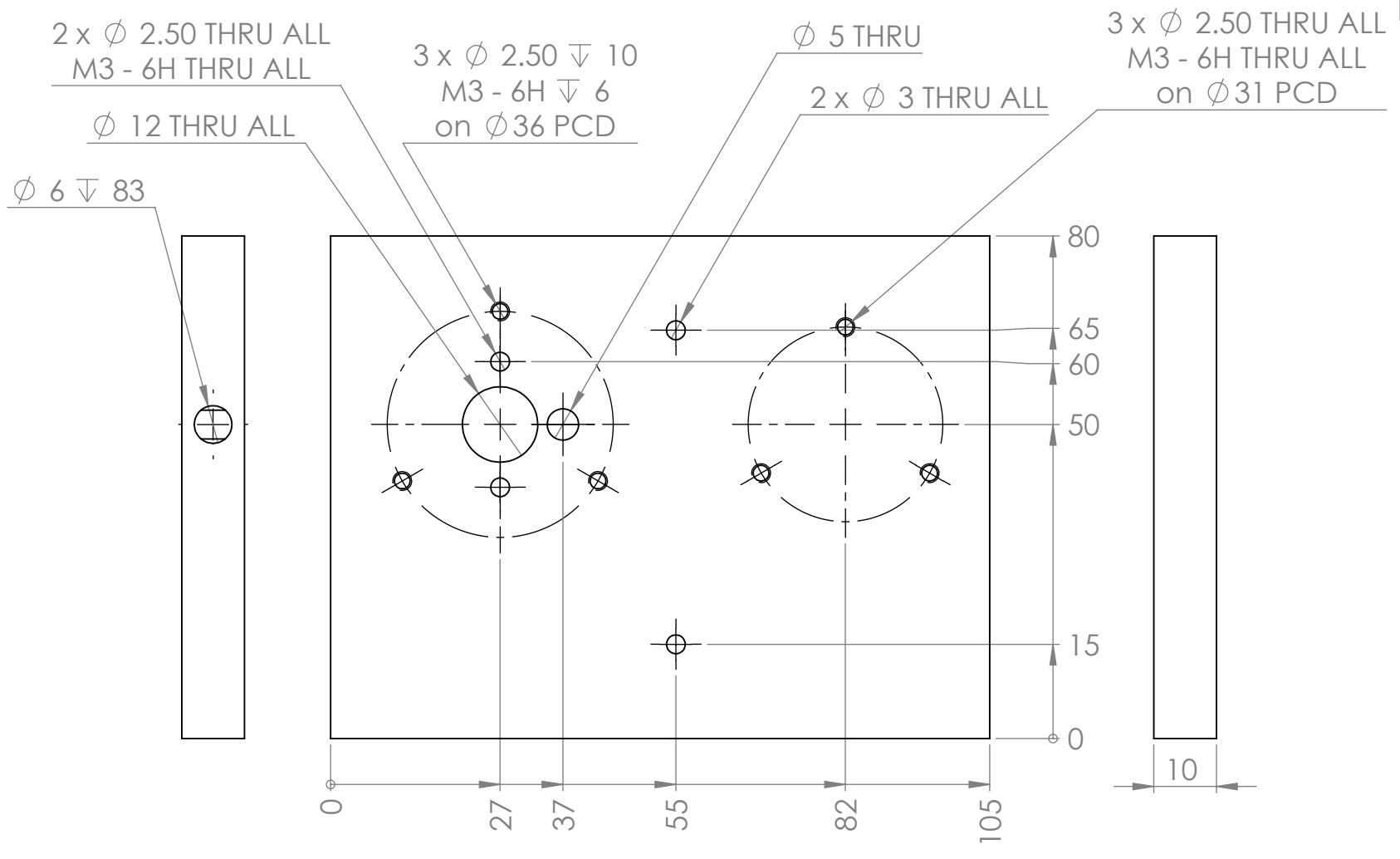


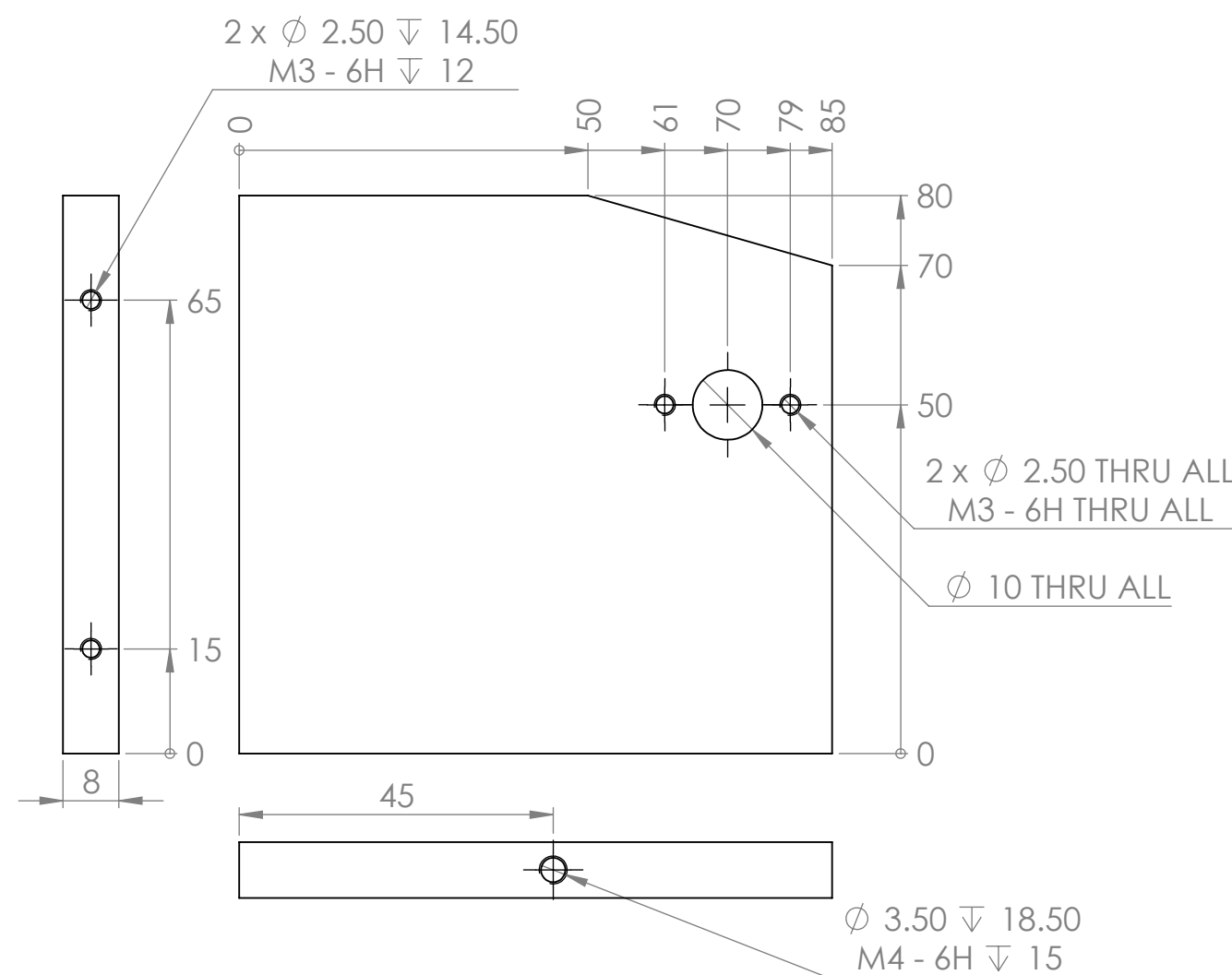
PART NUMBER	MATERIAL	QTY
Axle Bush	Brass	1
Axle Bush Plunger Side	Brass	1
Axle Crankpin	6061 Alloy	1
Axle Pin	6061 Alloy	2
Axle Shaft	6061 Alloy	1
Base	Mahogany	1
Candle Support	Brass	1
Cooling Cylinder	Brass	1
Cylinder Plate	6061 Alloy	1
Displacer	Glass	1
Displacer Connecting Ro	6061 Alloy	1
Displacer Body	Glass	1
Displacer Body Sleeve	Rubber	1
Displacer Cap	6061 Alloy	1
Displacer Crankpin	6061 Alloy	1
Displacer Guide	Brass	1
Displacer Shaft	6061 Alloy	1
Exterier Body of Cylinde	6061 Alloy	1
Glass Piston Body	Glass	1
Glass Syringe Body	Glass	1
Guide Rod Connecto	Brass	1
ISO 1234-2x10-F	Carbon Steel	1
ISO 4027 - M3 x 3-N	Carbon Steel	2
ISO 4027 - M3 x 5-N	Carbon Steel	2
ISO 4762 M3 x 16 --- 16	Carbon Steel	8
ISO 4762 M4 x 35 --- 20	Carbon Steel	3
ISO 7380 - M3 x 10 -- - 10	Carbon Steel	4
Parallel Pin ISO 8734 - 2 x 14 - A - S	Carbon Steel	1
Piston Supprt Plate	6061 Alloy	1
Plunger Connecting Ro	Brass	1
Plunger Collar	Brass	1
Pot	6061 Alloy	1
Pot Lid	6061 Alloy	1
Circlip - External	Carbon Steel	2
Tube	ABS PC	1
Wheel	Brass	1
Wheel Support	Brass	1
Wick	N/A	1



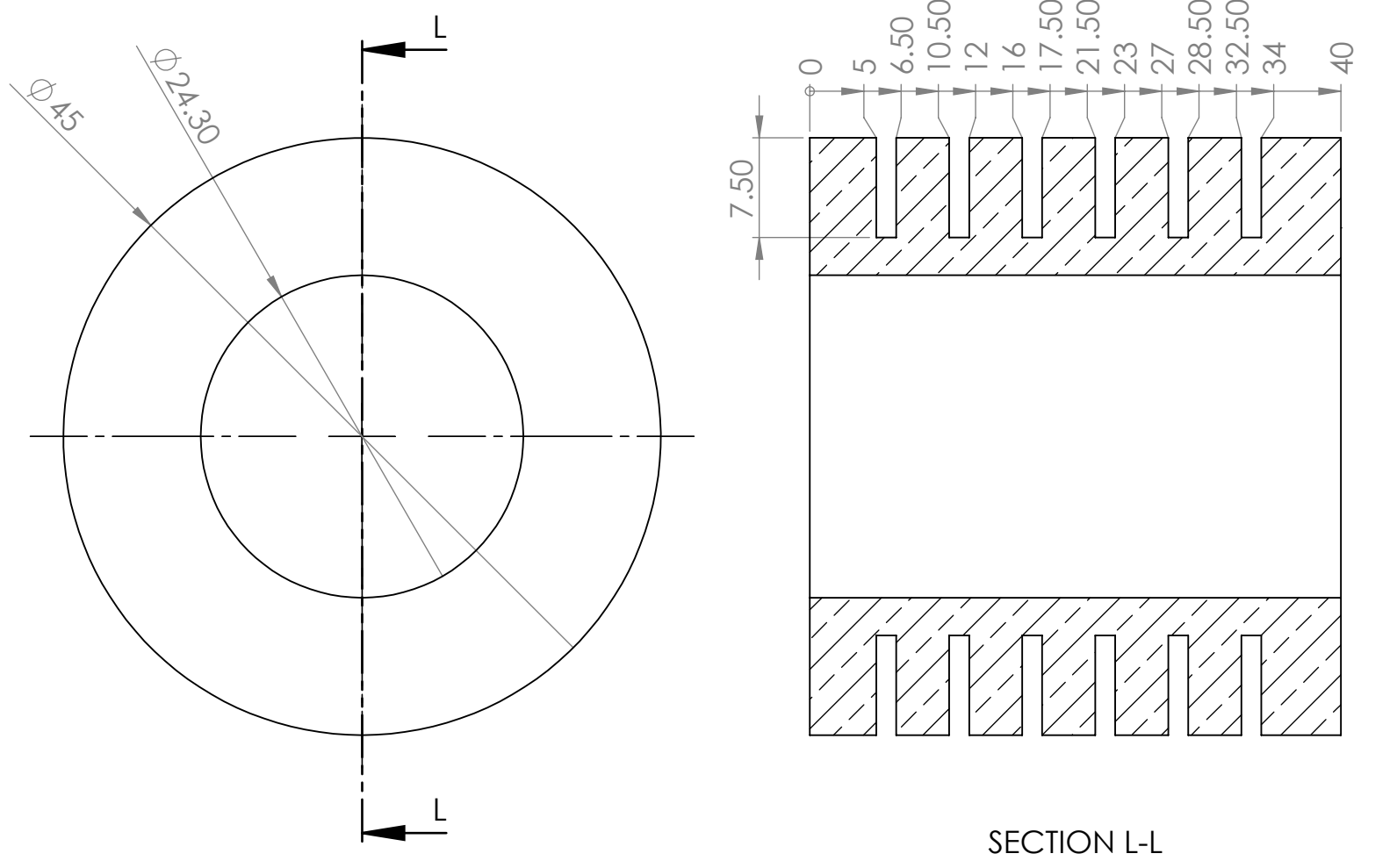
BASE
SCALE 1:2



CYLINDER PLATE
SCALE 1:1

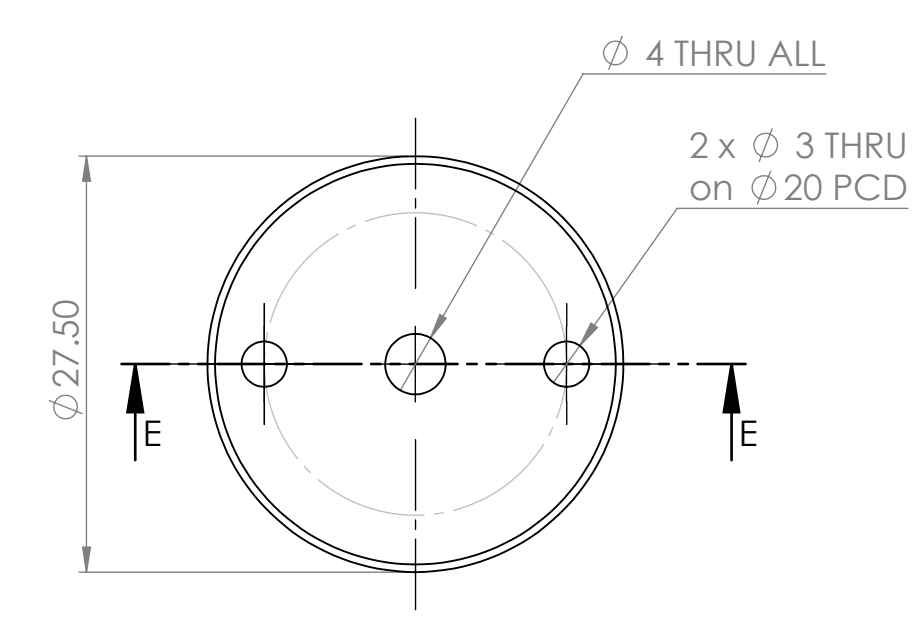


PISTON SUPPORT PLATE
SCALE 1:1

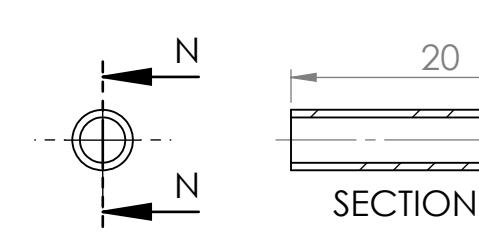


COOLING CYLINDER

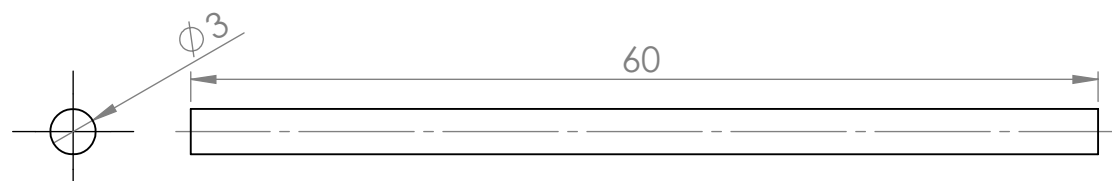
SECTION L-L



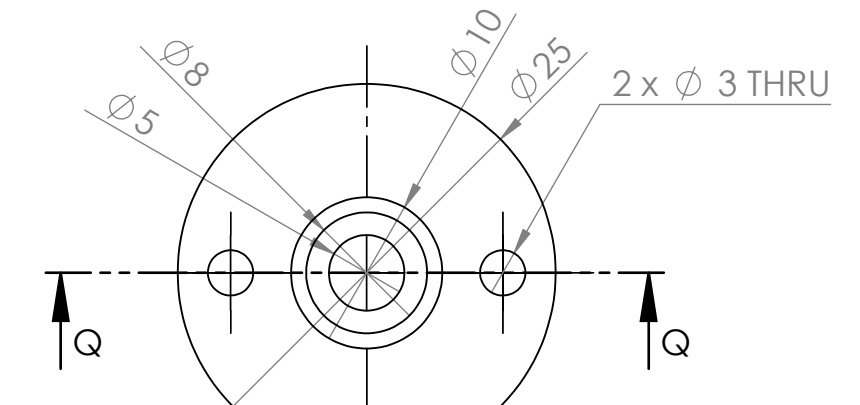
DISPLACER GUIDE



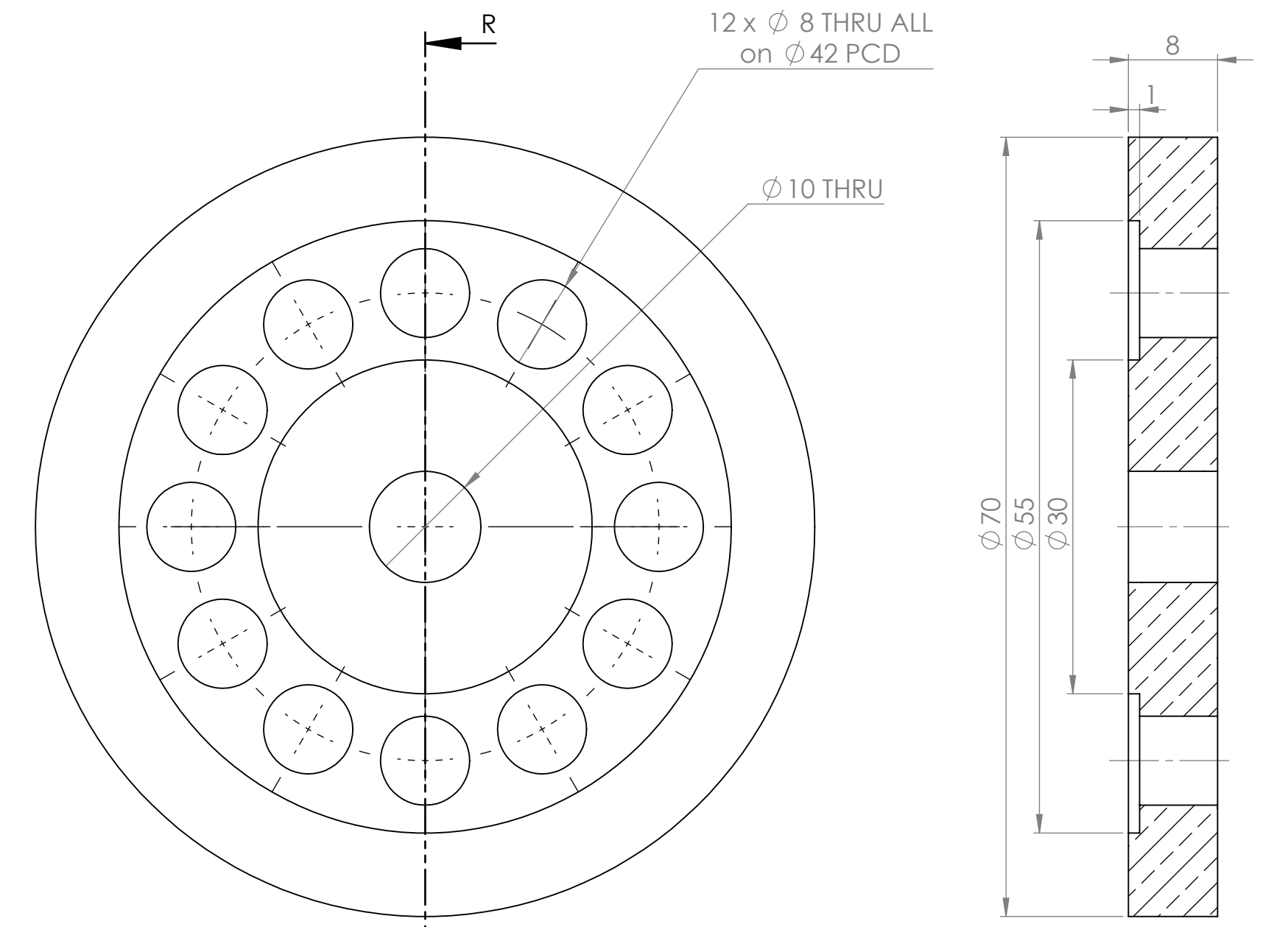
TUBE



DISPLACER SHAFT

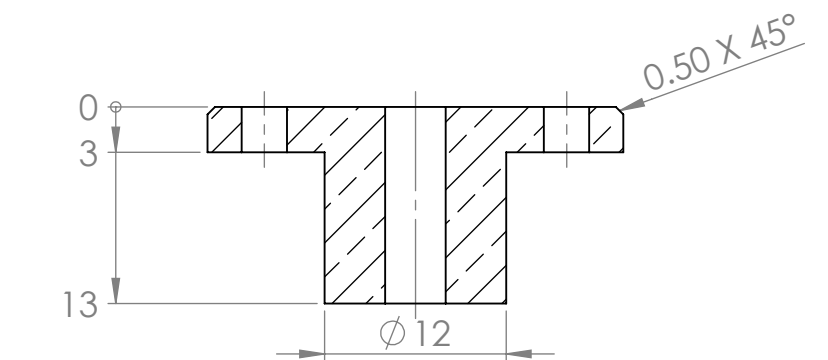


WHEEL SUPPORT

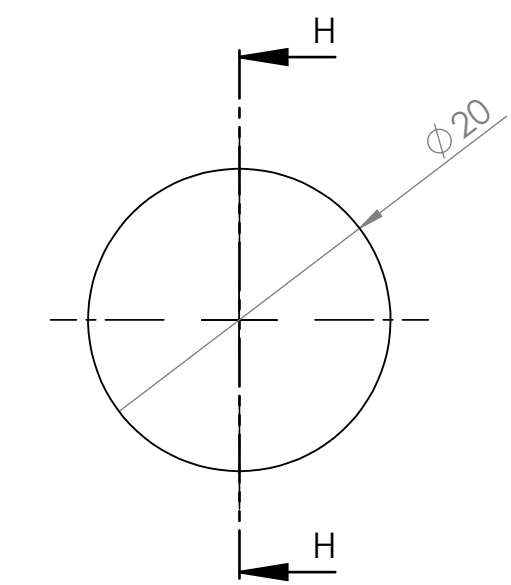


WHEEL

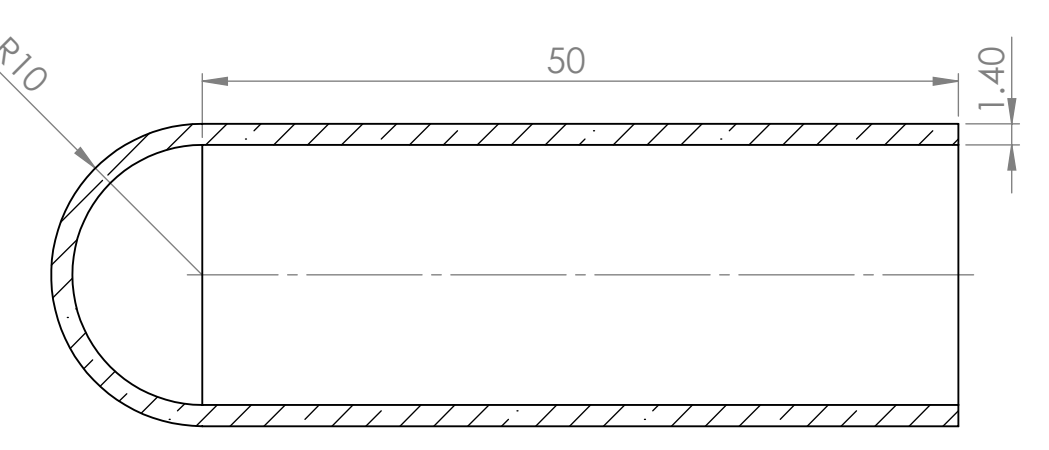
SECTION R-R



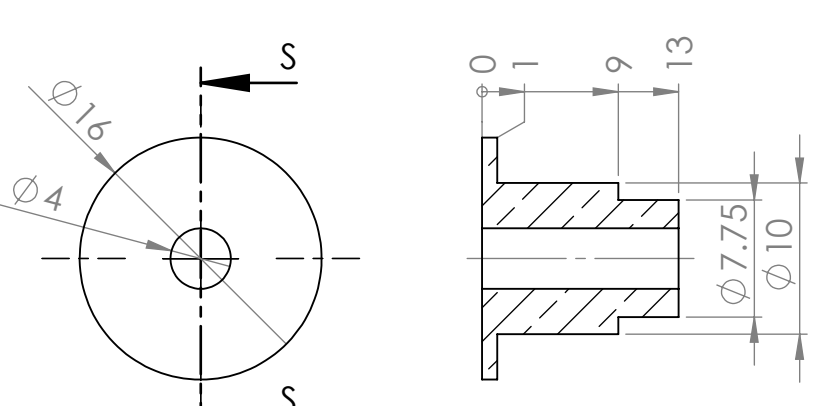
SECTION E-E



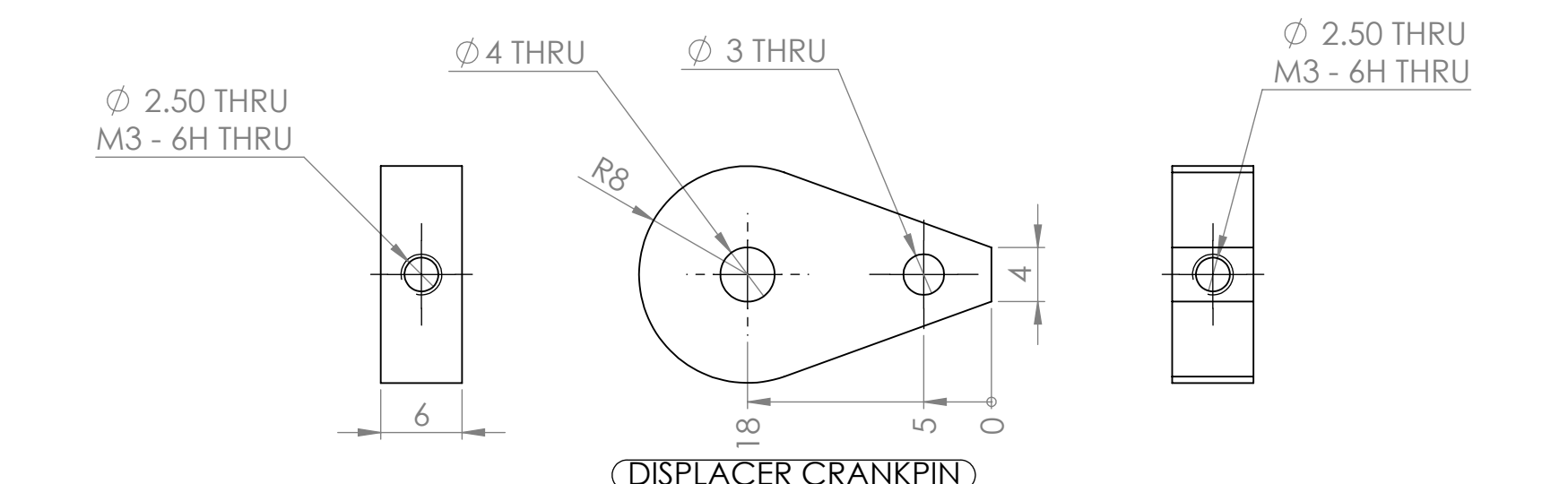
DISPLACER



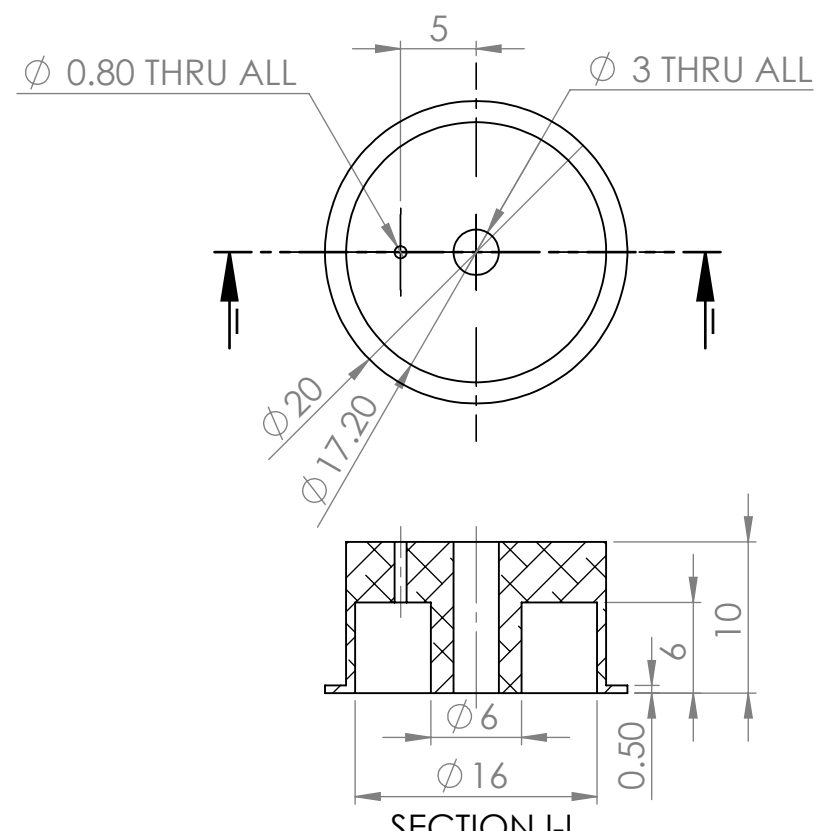
DISPLACER BODY



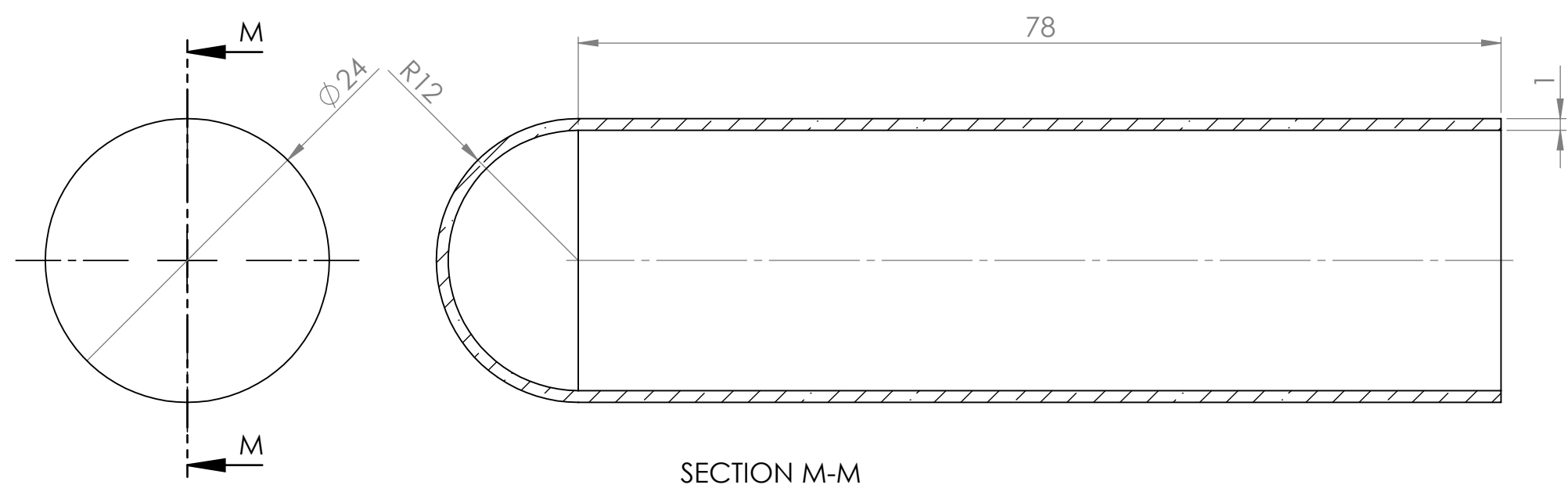
AXEL BUSH



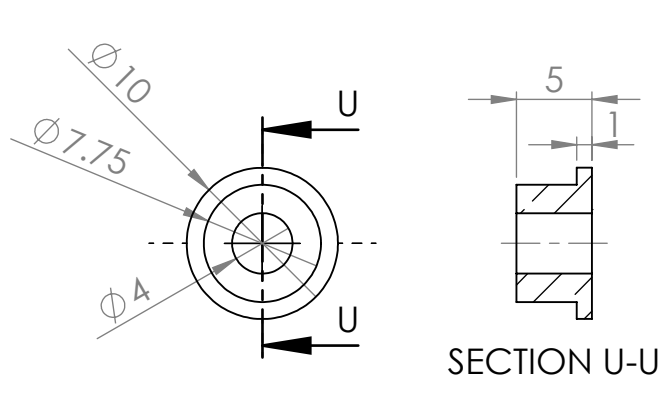
DISPLACER CRANKPIN



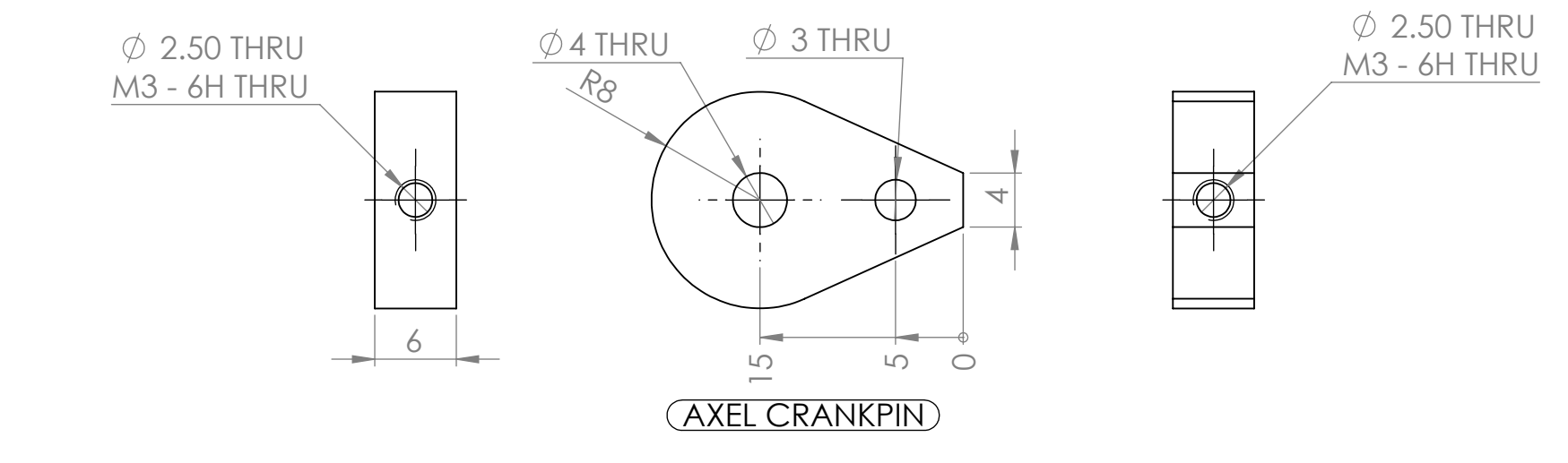
DISPLACER CAP



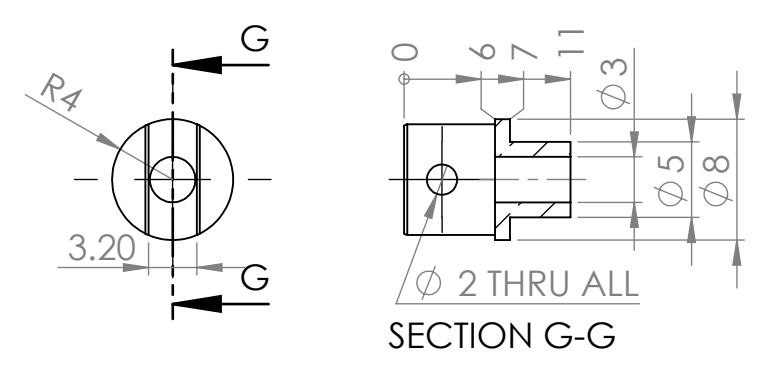
DISPLACER BODY SLEEVE



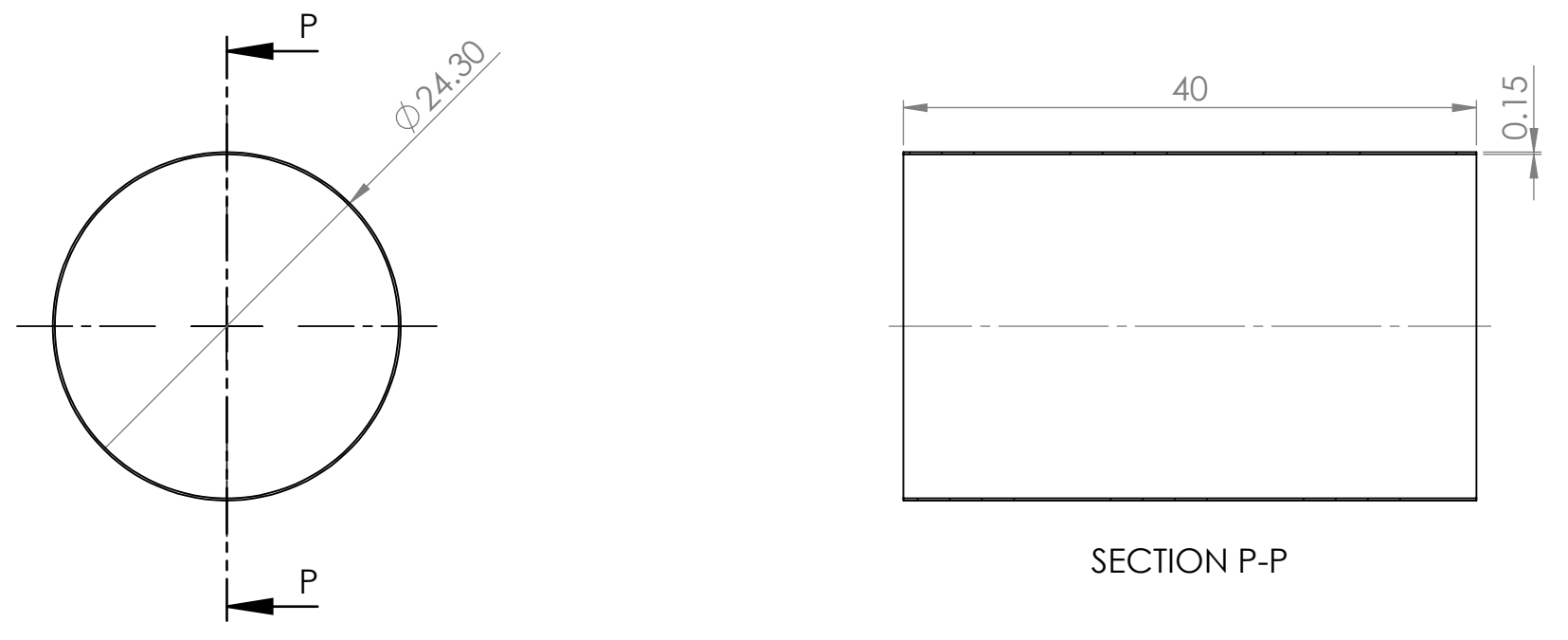
AXEL BUSH PLUNGER SIDE



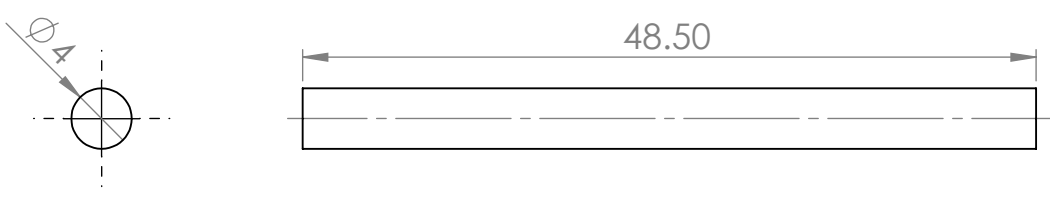
AXEL CRANKPIN



GUIDE ROD CONNECTOR



SECTION P-P



AXEL SHAFT

<p>TOLERANCES (UNLESS OTHERWISE STATED) FABRICATION ±1.5mm UP TO 1200mm FABRICATION ±2.0mm 1201mm TO 2000mm FABRICATION ±3.0mm 2001mm UP</p>		<p>THIS DRAWING IS THE PROPERTY OF CAD SKILLS UK LTD AND MUST NOT BE COPIED, GIVEN TO THIRD PARTIES, OR ISSUED FOR MANUFACTURE WITHOUT THE WRITTEN CONSENT OF CAD SKILLS UK LTD.</p>		<p>TITLE: 2012 CAD Regional Heat - Stirling Engine</p>	
<p>MACHINING ±0.25mm HOLE SIZE ±0.25mm ANGULAR ±0.5 DEG</p>		<p>CAD SKILLS UK LTD, HOY HOUSE, SOMERSET COLLEGE, WELLINGTON ROAD, TAUNTON, SOMERSET TA1 1AA www.cadskillsuk.com</p>		<p>NAME: Matthew Bell DATE: May 2012</p>	
<p>DO NOT SCALE DRAWING</p>		<p>APPROVED BY:</p>		<p>SHEET NAME: A1 UNIT: mm STANDARD: BS SCALE: 1:1</p>	